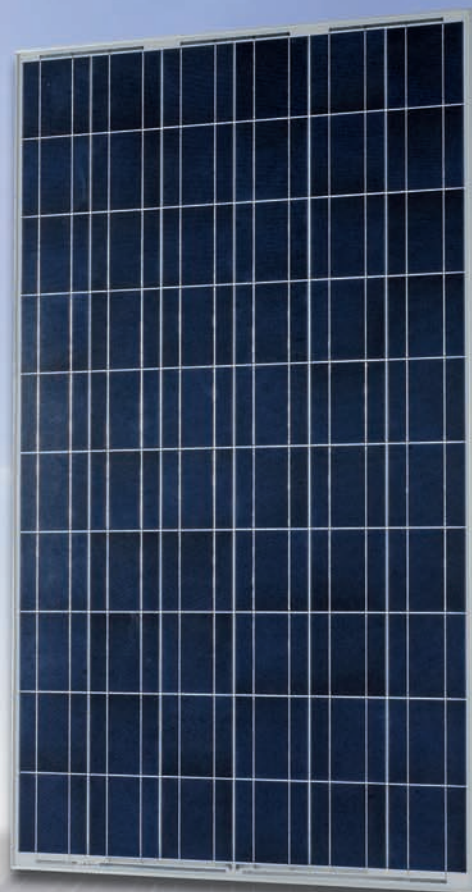


BAUER

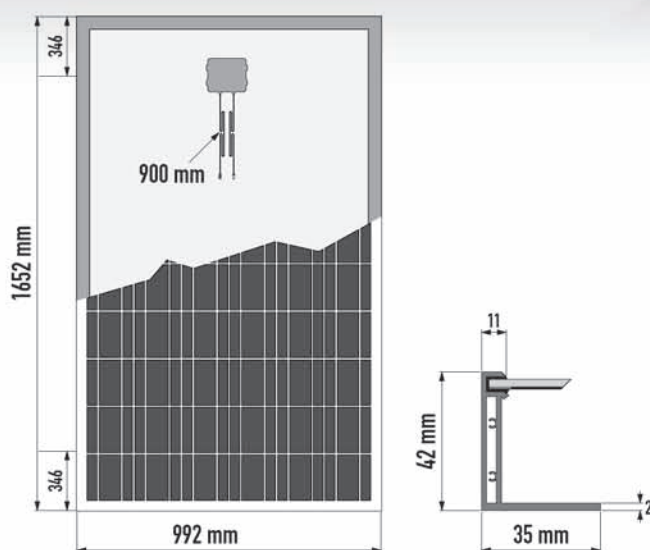
Solartechnik GmbH

DELIVERY SOLELY WITH POSITIVE
POWER OUTPUT TOLERANCE!

BAUER BS 6P2 230 W - 240 W



Polycrystalline solar module



Dimensions

Length	1652 mm
Width	992 mm
Height	42 mm
Weight	20 kg

Performance data

- positive power output tolerance +3/-0 %
- min. 90% output over a 10-year period
- min. 80% output over a 25-year period
- 10 years product guarantee

Test parameters (excerpt)

- Simulation of temperature cycles (200 cycles ranging from -40°C to +85°C)
- Vapour heat test in the climatic chamber (1.000 hours at 85°C and 85% relative humidity)
- Front and back panel load test (simulated wind load of 2.400 Pa, equivalent to 2.400 N/m² or 245 kg/m²)
- Simulated impact of hailstones (25 mm in diameter at 23 m/s from a distance of one meter)

Technical specifications

Frame	Silver, torsionally rigid, aluminium alloy mounting frame
Cells	60 polycrystalline cells (156 mm x 156 mm) connected in series
Connectors	Double insulated, UV-resistant 4 mm ² cable with weatherproof solar plugs
Diodes	3 bypass diodes protecting the module when in shade
Assembly	Front: highly translucent, toughened glass Back: white TPT film, embedding material: EVA

Electrical characteristics	BS-230-6P2	BS-235-6P2	BS-240-6P2
Nominal power P (Wp)	230	235	240
Voltage at Pmax Vmp (V)	30,22	30,6	31,18
Current at Pmax Imp (A)	7,62	7,69	7,71
Short-circuit current Isc (A)	8,21	8,27	8,32
Open-circuit voltage Voc (V)	36,68	36,84	37,3
Efficiency (η)	14,0%	14,3%	14,6%
Max. system voltage V (V)	1.000		
Temperature coefficient of Isc	+0,07 %/K		
Temperature coefficient of Voc	-0,36 %/K		
Test condition (STC)	1.000 W/m ² , 25°C, AM 1,5		
NOCT	46°C ± 2°C		

Qualifications and certificates

- IEC 61215 (ed. II)
- IEC 61730



BAUER BS 6P2



Polycrystalline module (detailed view)

BAUER
Solartechnik GmbH

Hinter der Mühl 2
55278 Selzen | Germany

Fon +49 (0) 6737 - 80 81-0
Fax +49 (0) 6737 - 80 81-10

info@bauer-solartechnik.de
www.bauer-solartechnik.de

